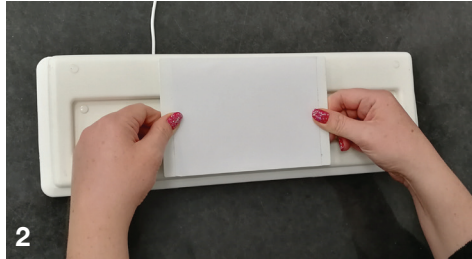


Sterile**FLAT**® **INSTALLATION**

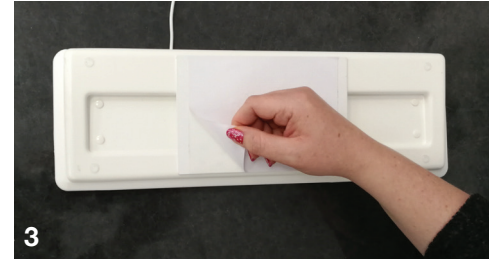
SterileFLAT MAGNETIC KEYBOARD FIXING PLATE



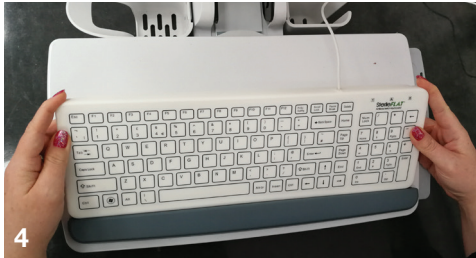
1
The SterileFLAT magnetic keyboard and fixing plate.



2
Position the fixing plate centrally face down over the magnetic keyboard base. Be sure the magnets have a firm hold of the plate.



3
Carefully peel off the backing sheet to reveal the adhesive.



4
Position the keyboard with the fixing plate magnetically attached in the desired position, press down lightly so the adhesive adheres.



5
Gently lift the keyboard leaving the fixing plate attached and in the correct position.



6
Press down the fixing plate to form a permanent bond, and ready to receive the SterileFLAT magnetic keyboard.



Admor

Phoenix Parade
Artex Avenue
Rustington
West Sussex BN16 3LN

t: +44 (0)1903 858910
f: +44 (0)1903 856251
e: print@admor.co.uk
w: www.admor.co.uk